

## REGISTRATION FORM

### 70<sup>th</sup> Annual San Antonio Society of Pathologists Seminar: Gynecologic and Obstetric Pathology: Lessons Learned January 11, 2014

REGISTER ONLINE AT: [www.SanAntonioSocietyofPathologists.org](http://www.SanAntonioSocietyofPathologists.org)

Please print or type:

Name \_\_\_\_\_  
First MI Last

Daytime telephone \_\_\_\_\_ Fax# \_\_\_\_\_

E-Mail Address \_\_\_\_\_

MD  DO  Other

Specialty \_\_\_\_\_

Street Address \_\_\_\_\_

City/State \_\_\_\_\_

Zip/Postal Code \_\_\_\_\_

Country \_\_\_\_\_

Do you have special requirements? YES  NO

Vegetarian? YES  NO

(If yes, you will be contacted by SASP to see how we can assist.)

Please register me for the course:

Seminar: **Gynecologic and Obstetric Pathology: Lessons Learned**

January 11, 2014

\$300 Physicians (on-site \$325)

\$110 Residents (with letter of verification)

\$110 Medical students (with letter of verification)

TOTAL ENCLOSED \$ \_\_\_\_\_ (Registration fee)

Make checks payable to "San Antonio Society of Pathologists." To register using a credit card, please visit: [www.SanAntonioSocietyofPathologists.org](http://www.SanAntonioSocietyofPathologists.org).

Mail to:

San Antonio Society of Pathologists  
c/o Nicole D. Riddle, MD  
7703 Floyd Curl Dr., MC 7750  
San Antonio, TX 78229

## REGISTRATION INFORMATION

The advanced registration fee for the Seminar will be \$300 for physicians and \$110 for residents and medical students (with letter of verification). Online registration is available on the SASP website: [www.SanAntonioSocietyofPathologists.org](http://www.SanAntonioSocietyofPathologists.org). Online registration payment options include use of a credit card or PayPal account.

To register by mail, send a check for the appropriate amount payable to SASP with the attached registration form. On-site registration will be available for \$325 (checks only).

If you must cancel your registration, tuition will be refunded less a \$50 administrative fee provided notice is received one week prior to the course.

The San Antonio Society of Pathologists reserves the right to limit registration or to cancel any course no less than one week prior to the course, should circumstances make it necessary. In that event, your registration fee would be refunded in full.

Mail to:

San Antonio Society of Pathologists  
c/o Nicole D. Riddle, MD  
7703 Floyd Curl Dr., MC 7750  
San Antonio, TX 78229  
Email: [riddlen@uthscsa.edu](mailto:riddlen@uthscsa.edu)  
Phone: 210-567-3748, Fax: 210-567-2478

## HOTEL ACCOMMODATIONS

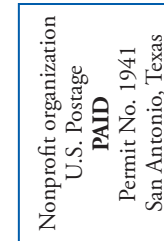
Rooms have been reserved at the Hilton San Antonio Airport Hotel, located at 611 N.W. Loop 410 in northwest San Antonio.

Reservations may be made by calling before the "cutoff date" of December 27, 2013 to receive the room rate of \$119 (single/double) plus tax. Be sure to indicate the group name of the San Antonio Society of Pathologists Annual Seminar.

Hilton San Antonio Airport Hotel  
611 N.W. Loop 410  
San Antonio, TX 78216  
Reservations: Call 1-888-728-3031 or fax to 210-377-4695.



SAN ANTONIO SOCIETY OF PATHOLOGISTS  
Nicole D. Riddle, MD  
7703 FLOYD CURL DR., MC 7750  
SAN ANTONIO, TX 78229



70<sup>th</sup> Annual

San Antonio Society of Pathologists Seminar:  
Gynecologic and Obstetric Pathology: Lessons Learned  
January 11, 2014

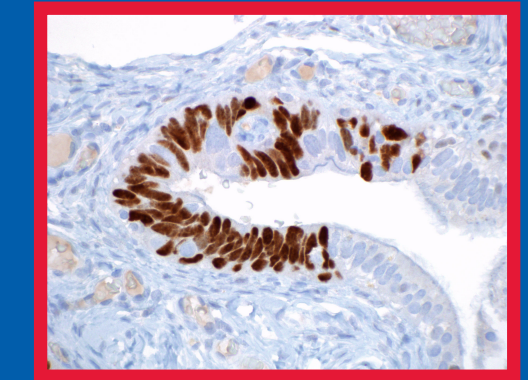
## 70<sup>TH</sup> ANNUAL SEMINAR San Antonio Society of Pathologists

Christopher P. Crum, M.D.

Vice Chair and Director, Women's and Perinatal  
Pathology Brigham and Women's Hospital

Professor, Department of Pathology  
Harvard Medical School

## Seminar: Gynecologic and Obstetric Pathology: Lessons Learned



Saturday, January 11th, 2014  
Hilton San Antonio Airport Hotel  
San Antonio, Texas

SPONSORED BY THE SAN ANTONIO SOCIETY OF PATHOLOGISTS  
AND THE COLLEGE OF AMERICAN PATHOLOGISTS AND THE  
UNIVERSITY OF TEXAS HEALTH SCIENCE CENTER AT SAN ANTONIO

## CONCEPT

This seminar will cover the important clinical and histologic features and variations for both common and unusual diseases, underlining the most characteristic features. Case presentations will be used to highlight a practical approach to diagnosis. Issues regarding pathogenesis and treatment that are of importance to the Surgical Pathologist will be covered. The overall aim is to refresh the attendee's knowledge and to provide a conceptual framework that will allow the Pathologist to approach gynecological and obstetric specimens with confidence.

## OBJECTIVES

At the completion of the seminar, participants will be able to:

1. Understand the range of potential precursors in the vulva
2. Outline the approach to cervical precursor disease
3. Separate benign from potentially malignant endometrial precursors
4. Identify potential pitfalls in gynecologic cancer diagnosis

## AUDIENCE

The audience for the Saturday Seminar is expected to consist of Pathologists, Gynecologists, and trainees.

## LOCATION AND TIMES

The Seminar will begin Saturday morning, January 11th 2014 at the Hilton San Antonio Airport Hotel, located at 611 N.W. Loop 410 in northwest San Antonio.

Registration and distribution of materials will begin at 7:30 a.m; the program will begin at 8:00 a.m. Lunch will be provided, and the program will conclude at 5:00 p.m.

## FORMAT

The Seminar, Gynecologic and Obstetric Pathology: Lessons Learned, will be presented by Dr. Christopher Crum. Time will be available for questions from the audience at the end of each section. Cases will be made available to registrants prior to the seminar online via virtual microscopy; user name, password, and instructions will be distributed to registrants by email upon registration.

## PROGRAM

### 70<sup>th</sup> Annual Seminar: Gynecologic and Obstetric Pathology: Lessons Learned Saturday, January 11, 2011 Hilton San Antonio Airport Hotel

#### Case presentations by Christopher P. Crum, M.D.

7:30 a.m. Registration & Continental Breakfast

8:00 a.m. Introduction: Francis E. Sharkey, M.D., Course Director

8:15 a.m. Potential Precursor Lesions in the Vulva

10:00 a.m. Break

10:30 a.m. Cervical Precursor Lesions

CME session ends

12:00 p.m. Lunch (provided)

CME session resumes

1:00 p.m. Benign and Potentially Malignant Precursors in the Endometrium

2:45 p.m. Break

3:15 p.m. Potential Pitfalls in Gynecologic Cancer Diagnosis

5:00 p.m. Adjournment



*Dr. Crum was educated at University of Virginia Medical School and completed his residency there in 1979. After a fellowship in gynecologic pathology with Ralph Richart at Columbia Presbyterian Hospital in New York City, he joined the staff there and worked in the laboratory of Saul Silverstein where he received a Physician Scientist award from the National Institutes of Allergy and Infectious Disease in 1985. In 1987 he joined the pathology department at University of Virginia and in 1990 became director of Women's and Perinatal Pathology at Brigham and Women's Hospital. In 1996 he became Professor of Pathology at Harvard Medical School. Among his contributions are the first publication linking cervical precursors to HPV 16 in 1984, studies in the early 1990's describing HPV negative precursors in the vulva, expression of p63 in the female genital tract in 2001, evidence that the distal fallopian tube is the origin of many pelvic serous carcinomas starting in 2006, and the first description of a putative cell of origin to cervical cancer in the cervical squamo-columnar junction in 2012. He has authored over 300 articles, three books, including a major text, Diagnostic Gynecologic and Obstetric Pathology, and numerous chapters. His program in Women's and Perinatal Pathology has trained hundreds of residents and fellows, many currently in academic and private practice. He currently directs a division with 10 full time staff that ranks among the largest and most diverse academic gynecologic and obstetric pathology programs.*

## SEMINAR COURSE CO-DIRECTORS

Francis E. Sharkey, M.D.

President of SASP

Professor of Pathology

University of Texas Health Science Center

San Antonio, Texas

sharkyf@uthscsa.edu

Nicole D. Riddle, M.D.

Secretary of SASP

Assistant Professor of Pathology

University of Texas Health Science Center

San Antonio, Texas

riddlen@uthscsa.edu

Kristin Fiebelkorn, M.D.

Treasurer of SASP

Associate Professor of Pathology

University of Texas Health Science Center

San Antonio, Texas

fiebelkorn@uthscsa.edu

## FACULTY

## ACCREDITATION STATEMENT

This activity has been planned and implemented in accordance with the Essential Areas and Policies of the **Accreditation Council for Continuing Medical Education** (ACCME) through the joint sponsorship of **The College of American Pathologists (CAP)** and **The San Antonio Society of Pathologists**.

The College of American Pathologists is accredited by the Accreditation Council for Continuing Medical Education to provide continuing medical education for physicians.

The College of American Pathologists designates this educational activity for a maximum of 6.75 AMA PRA Category 1 Credits™. Physicians should only claim credit commensurate with the extent of their participation in the activity.

## SAN ANTONIO

January in San Antonio is a particularly beautiful time of year with a moderate climate. San Antonio offers a rich variety of dining, entertainment, and shopping along the Riverwalk. The Mexican Market, El Mercado, bustles with the people, products, and outdoor restaurants which give San Antonio much of its unique style. The adobe dwellings of the historic La Villita serve as homes for artisans, galleries, and restaurants. The Rivercenter Mall is a visual delight, with whimsical-to-elegant shops overlooking the Riverwalk. Shuttle service to Northstar Mall, which is immediately across the highway, is offered by the Hilton Hotel.

